

# Positive Behavioural Support / Autism Training Fund Evaluation, September 2016





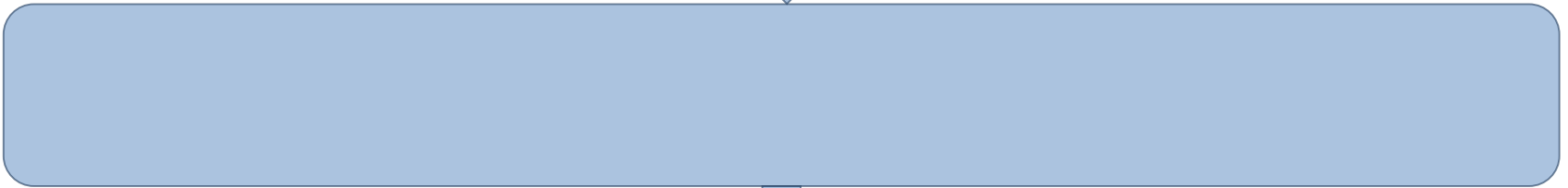
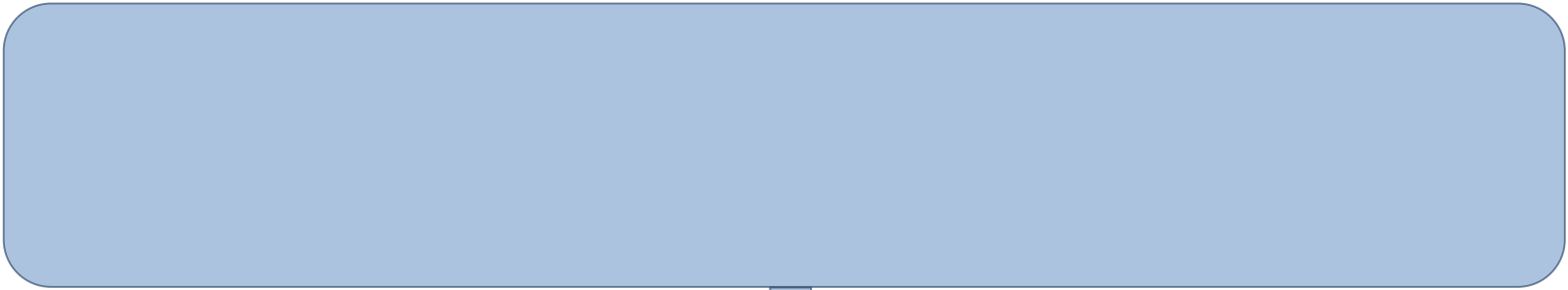
The Positive Behavioural Support and Autism Training Fund was funded by the 'positive and safe programme' and established to contribute to the aims of the Transforming Care programme through financial support for:

- Developing 'skills around the person'
  - Interagency / multi agency work at a person centred level
  - Providing training in line with PBS competency framework or good autism practice
  - Contribution to the discharge (or avoided likely admission) of one or more persons
-



- To monitor the progress of the funds distributed
  - To assess the actual delivery against that planned
  - To assess the costs of training
  - To provide an opportunity for early feedback on the impact of the training
  - To measure short term outcomes of the funding programme
  - Longer term, different approaches to training could be examined
-



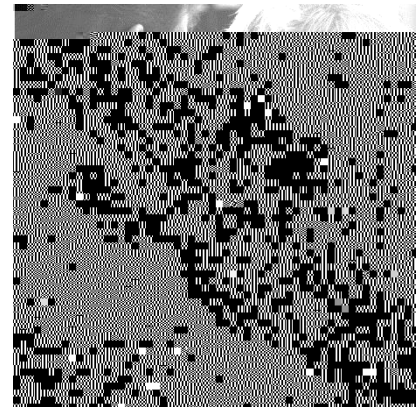
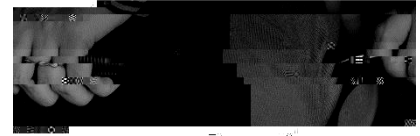


No. grants awarded	No. of organisations	Monitoring responses	Evaluation responses





# Summary





•

•

•

•

•

•



•

•

—

•

•

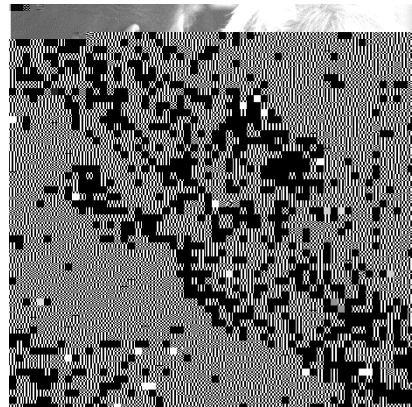
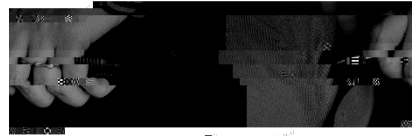








# Evaluation



- To provide an opportunity for early feedback on the impact of the training
- 



-

-

-

-

-







•

•

•

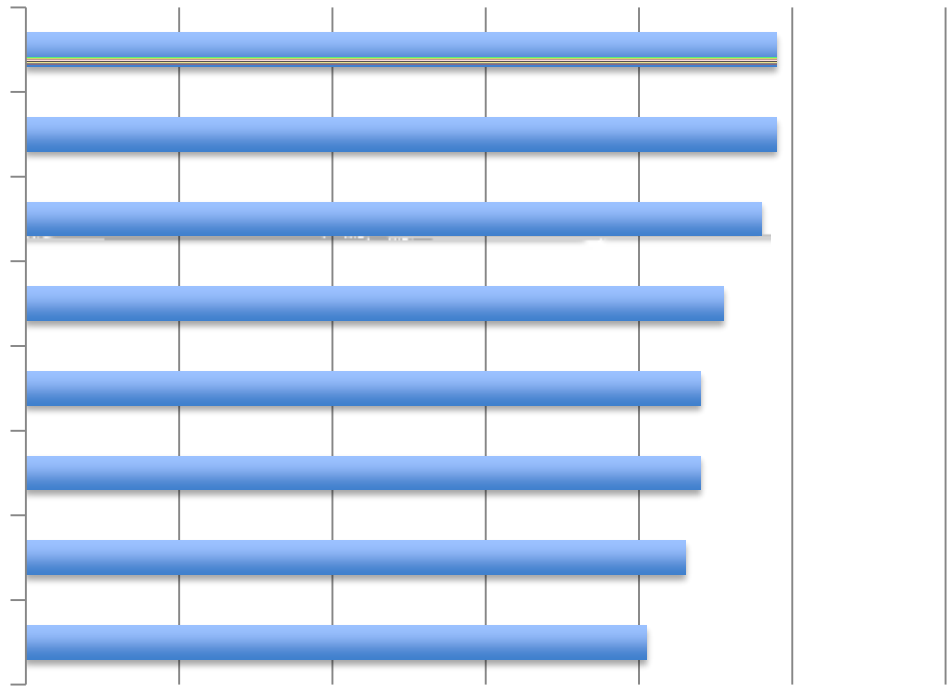
•

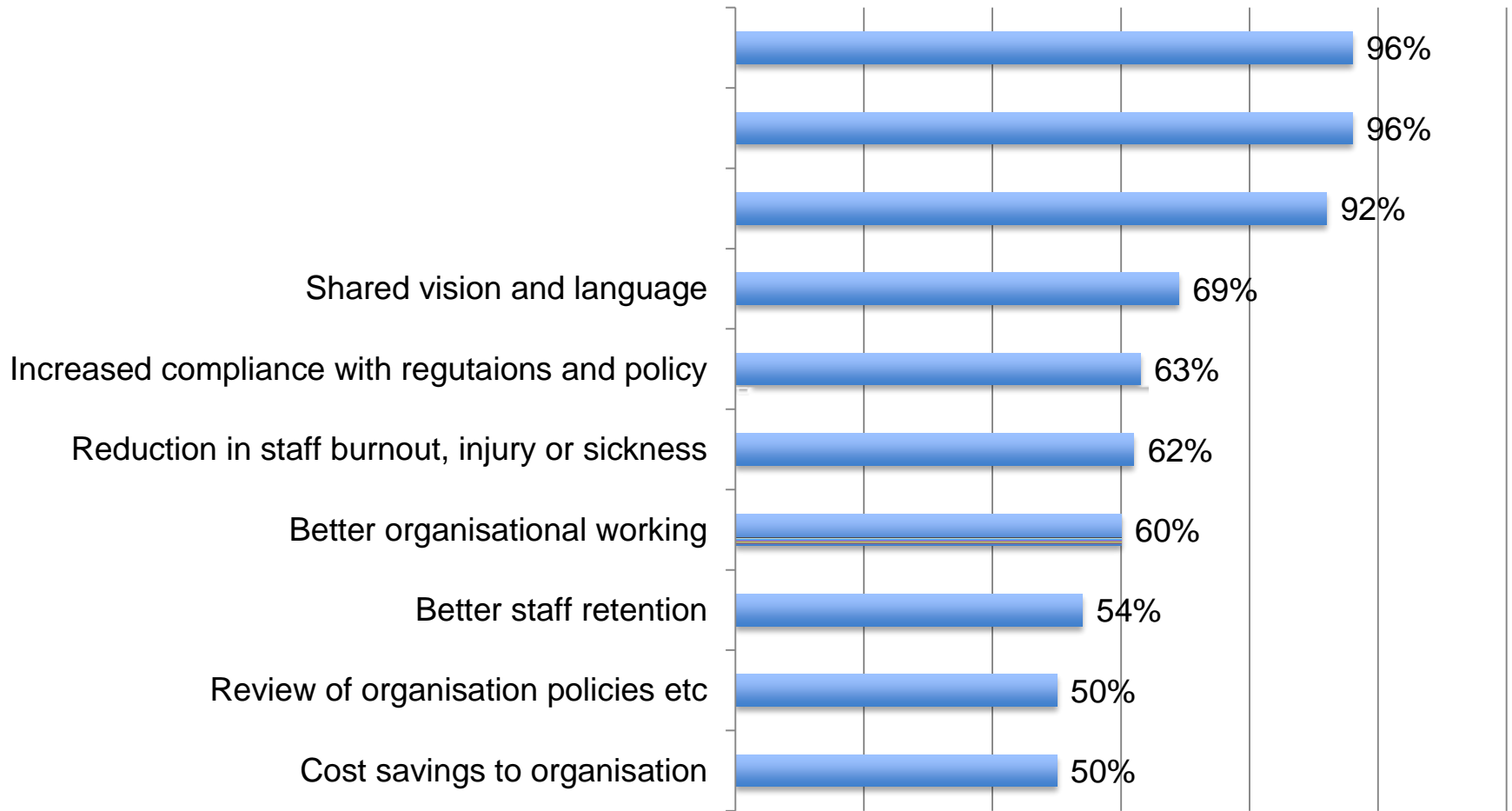
•

•











•

•

•

•

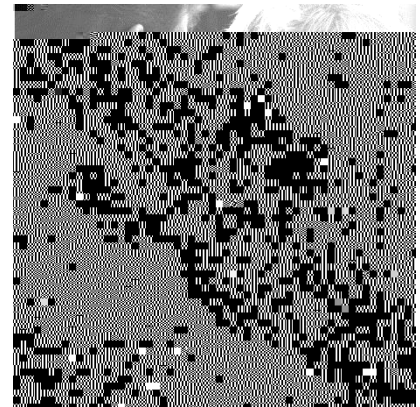
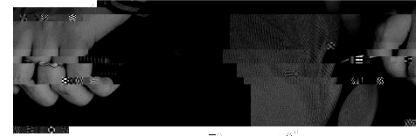








# Conclusions



•

•

•

•

•



Skills for Care:

[www.skillsforcare.org.uk/transformingcare](http://www.skillsforcare.org.uk/transformingcare)

Skills for Health:

[www.skillsforhealth.org.uk/transformingcare](http://www.skillsforhealth.org.uk/transformingcare)

HEE