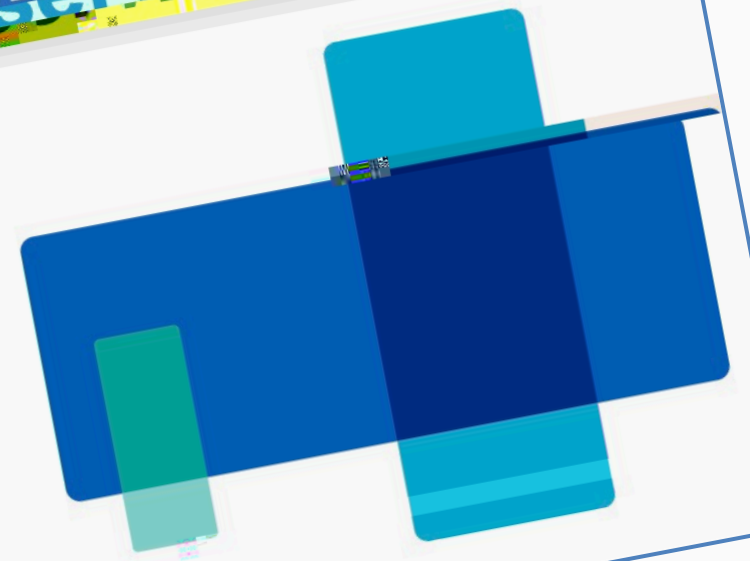
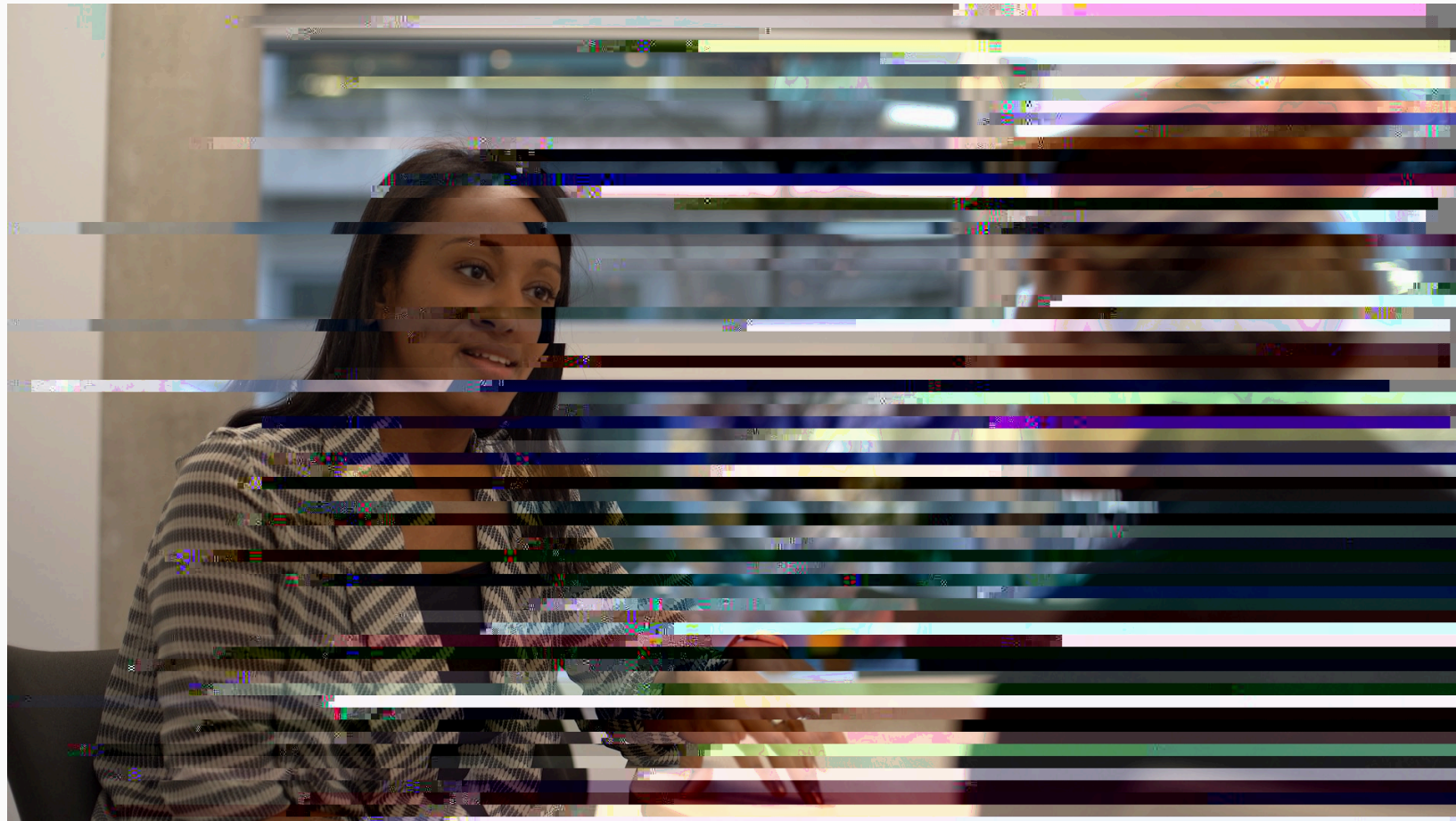




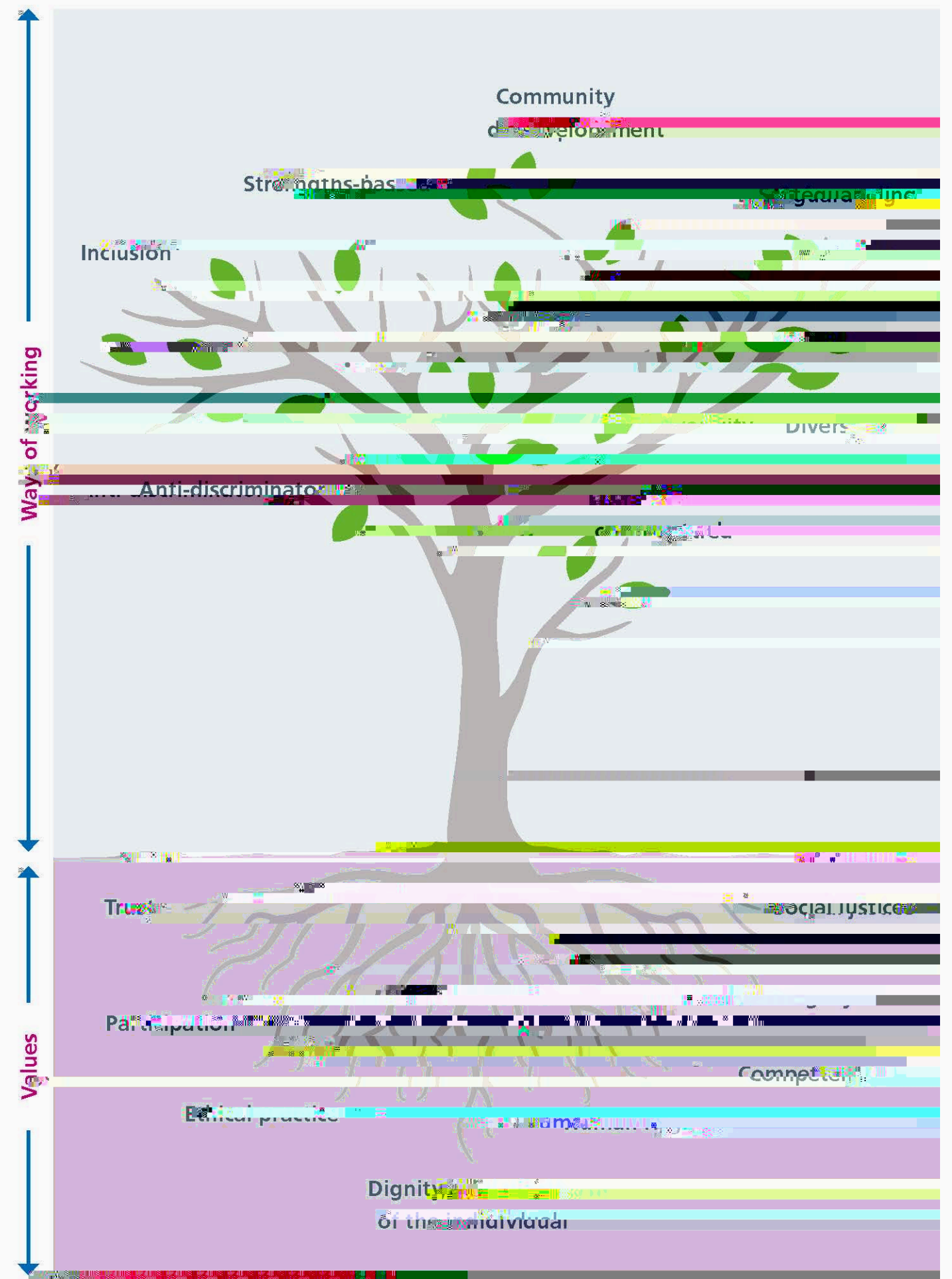
Guidance on the support of Mental Health Social Workers and Approved Mental Health Professionals (AMHPs) working in NHS, independent and integrated services



Published 2024



- Why the Guidance is refreshed and updated
- Purpose of the Guidance
- Overview of unique role of mental health social work
- Outline of responsibilities of commissioners developing new services or redesigning systems



L ca a

a

a

a c

The Standards for employers of social workers in England 2020

Good social work can transform people's lives and help protect them from harm.



Why do we need the standards for employers?

Good social work can transform people's lives and help protect them from harm. To achieve consistently high-quality outcomes, social workers must have and maintain the skills and knowledge to establish and maintain a clear social work framework for children, adults, families, and professional staff in a range of agencies and settings across the country.

F

C

